



Simpson Court

DEVELOPMENT INFORMATION



Simpson Court is a development comprising eight homes and is located in South Croydon, just off the Brighton Road. Completed in November 2016, it has been developed in partnership with Orbit and part funded by the GLA.

This scheme consists of three x2 bedroom and five x1 bedroom apartments for affordable rent.



Photos of all our developments can be found on Twitter [#CCHAConnections](#)

In partnership
with



tel: 020 8680 7532 freephone: 0800 054 6710
email: customers@ccha.biz www.ccha.biz

Simpson Court

DEVELOPMENT INFORMATION

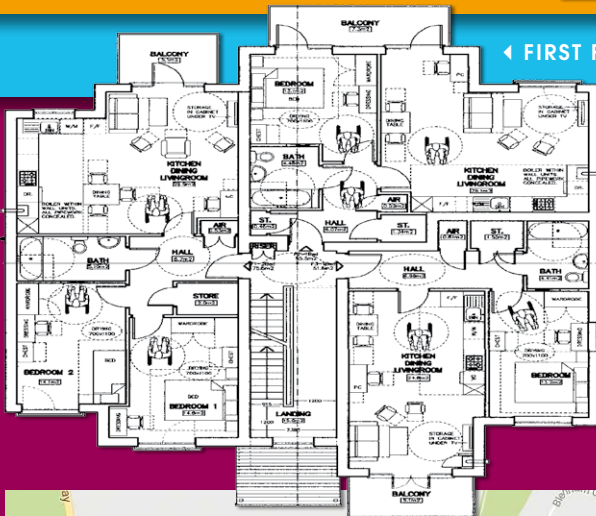
With impressive facilities and transport links, Simpson Court is an excellent scheme which meets the London Design Guide Criteria.

The building work started in January 2016 and was completed in November 2016.



← FIRST FLOOR PLAN

KITCHEN ▾



LOCATION ▾

